

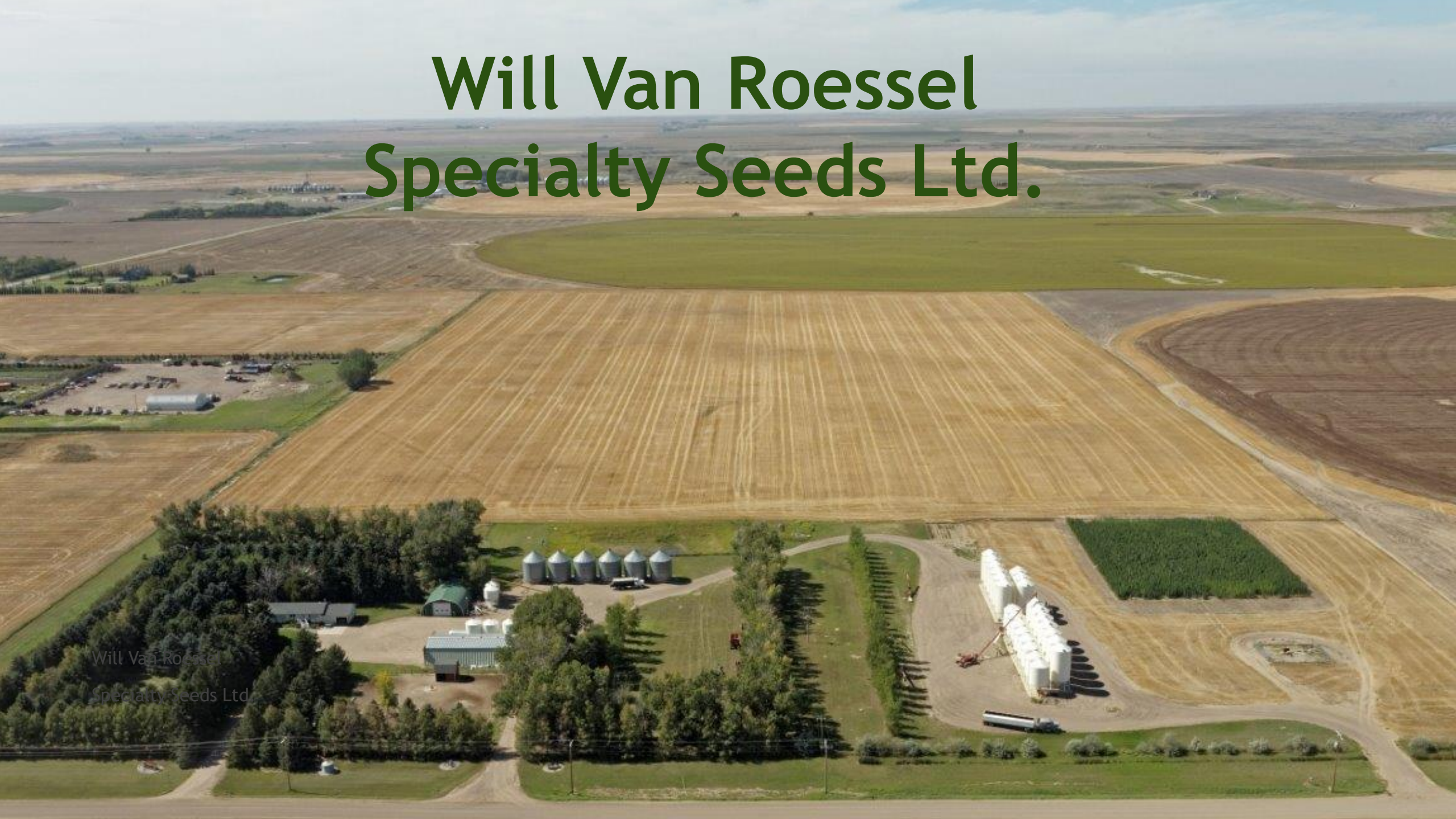
HYBRID CANOLA AGRONOMY

January 16, 2018

Lethbridge, AB

Will Van Roessel Specialty Seeds Ltd.

Will Van Roessel
Specialty Seeds Ltd.



MAIN ISSUES

- ▶ Field history
- ▶ Isolation
- ▶ Weed Control
- ▶ Pollination

FIELD HISTORY

- ▶ Minimum 4 years between canola
- ▶ Pre-scout fields the year before

ISOLATION

- ▶ Minimum 800 m (1/2 mile) from another field
- ▶ No volunteers within that 800 m
- ▶ Some companies want 1 mile isolation







WEED CONTROL

- ▶ Not all parent lines are tolerant to same herbicide





POLLINATION

Honey
bees

Leaf cutter
bees

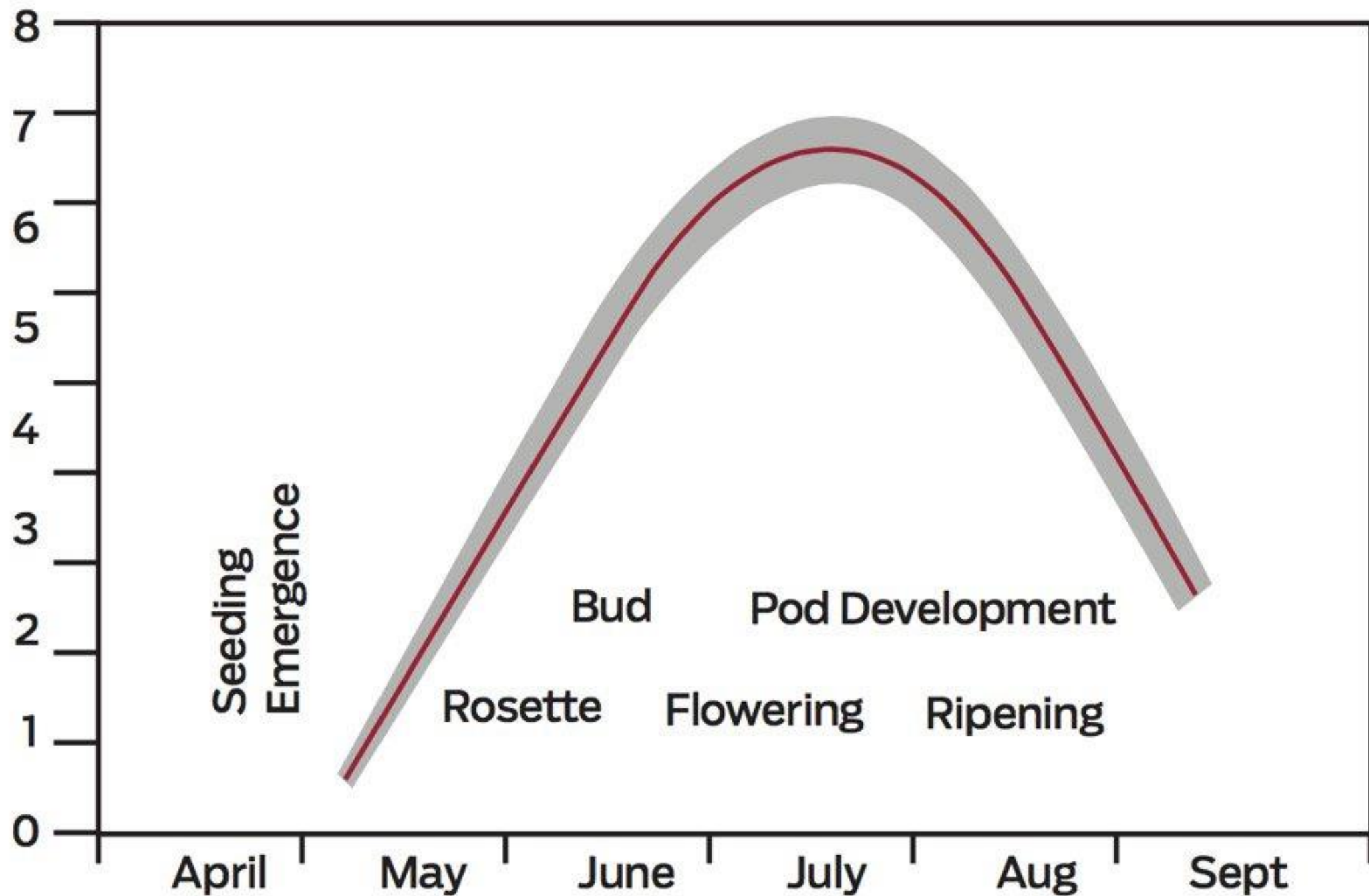








Daily water use (mm)







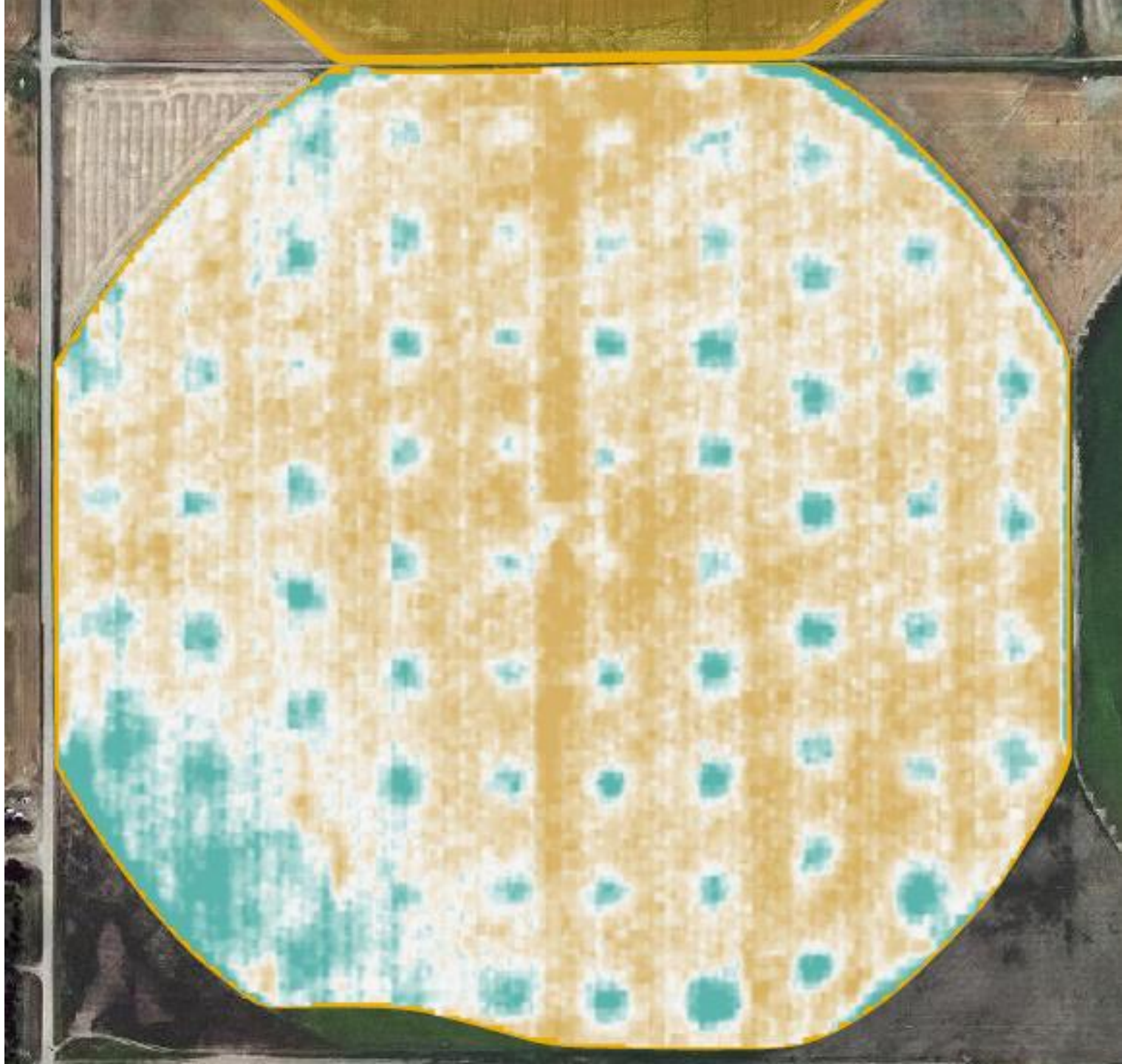
Write a description for your map.



Google Earth

114

Image S. Alberta MD's and Counties



Managing for Optimal Pollination

- ▶ Irrigation scheduling
- ▶ Leafcutter shelter density
- ▶ Leafcutter shelter placement
- ▶ Keeping bees dry
- ▶ Keeping canopy dry
- ▶ Others